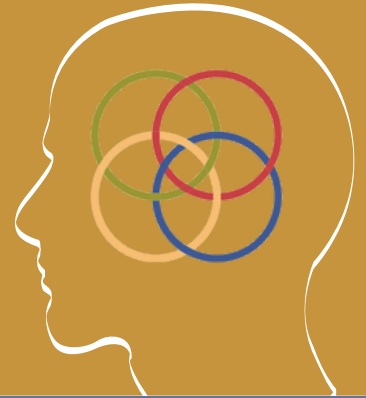


Discover the Power of DiSC® for Your Business

Unlock the Potential of Your Team

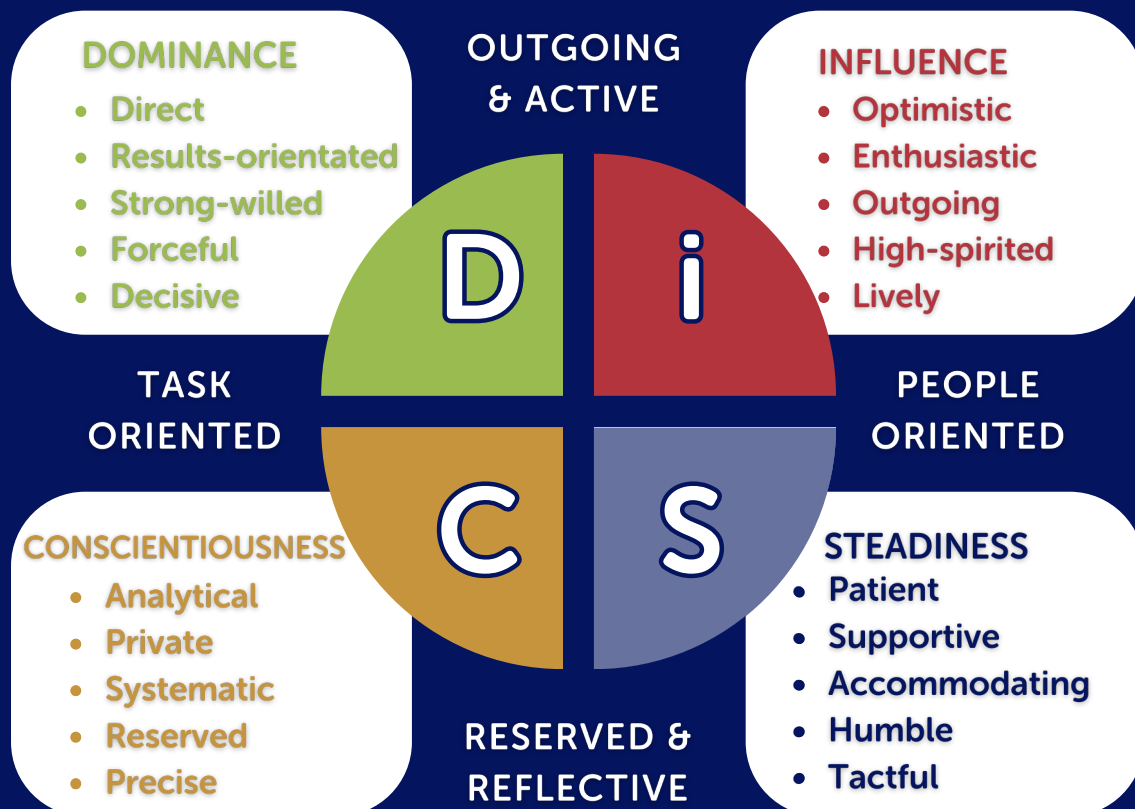


What is DiSC® ?

DiSC® is a practical assessment tool for understanding behaviour and communication. It improves collaboration, reduces conflict, and fosters a more harmonious, successful workplace.

Understand Your Behavioural Style

DiSC® categorises behaviour into four main types, each representing a specific approach to tasks, communication, and decision-making.



Everyone is a unique blend of the four DiSC® styles, with one or more typically dominant. By understanding and valuing these differences, teams can enhance communication and build healthier, more effective organisations.



Implementing DiSC® within your organisation offers a range of significant benefits, enhancing both team dynamics and overall productivity.



Enhanced Communication and Collaboration

DiSC® helps teams understand and appreciate each other's communication styles, strengths, and challenges, resulting in smoother interactions, stronger relationships, more effective teamwork, and a cohesive work environment.



Improved Productivity

Understanding DiSC® styles leads to more effective task allocation, enhancing team efficiency and overall performance.



Increased Engagement and Inclusivity

Valuing diverse work styles, tendencies and priorities fosters an inclusive environment, boosting employee engagement and motivation.



Conflict Reduction

Understanding behavioural differences reduces friction, creating a more harmonious and supportive workplace.



Better Retention

A DiSC®-informed culture leads to higher employee satisfaction and retention, contributing to long-term organisational success.



ACCESS TO DiSC® CATALYST™ PERSONALISED ONLINE PLATFORM

As part of the process, we provide access to DiSC® Catalyst™, a personalised online learning platform that helps employees seamlessly apply DiSC® insights in their daily work. DiSC® Catalyst™ offers tailored feedback and actionable strategies to enhance workplace interactions.

**Transform
Your Workplace
Today!**